

HENRY S. ZIEGLER'S
THE
PAINTERS FAVORITE.

MANUFACTURED AT THE



OFFICE

NO 121 N. 4TH ST.

READY MIXED
COTTAGE PAINTS

BEAUTIFUL DURABLE ECONOMICAL
PREPARED FOR IMMEDIATE USE

PHILADELPHIA.

ZIEGLER'S

READY MIXED PAINTS.

ENTIRELY READY FOR USE.

Beautiful and Durable Colors. These paints are in liquid form, and need no preparation whatever.

Will Prove {
More durable than any other.
Far more beautiful than any other.
It will not crack or peel off.
It will cover more surface than any other.
More economical than any other.

We pack also

CENTENNIAL MIXED PAINTS,

In small cans, in liquid form, and entirely ready for use.
Black, Buff, Light, Cream, Drab, Dark, Red, Brown, Lead Color, White, Blue, Green, Yellow.

Packed in 50 lb. cases—1 and 2 lb. cans.

ZIEGLER'S PASTE PAINTS.

GROUND SAME AS WHITE LEAD.

These Paints are in Paste form, and need only the addition of usual thinners. The same Tints as the Ready Mixed Paints.

Packed in 25, 50, and 100 lb. kegs, $\frac{1}{2}$ bbls. and barrels.

NO TROUBLE TO SELL THEM.

Their quality creates the demand. Used by Practical Painters.

Manufactured by

HENRY S. ZIEGLER,

Store, No 121 North Fourth Street.

Factory, Nos. 611 & 613 St. John Street.

PHILADELPHIA.

Henry S. Ziegler's

THE

PAINTERS' FAVORITE

READY MIXED

COTTAGE PAINTS.

Sold by the Gallon,

Mixed Ready for the Brush,

and require no additional material of any kind.

These Paints are beautiful, economical and durable, and may be applied to any surface,—wood, plaster, brick, stone or iron.

They are water-proof, and will not fade, peel, crack, chalk or blister.

In the manufacture of these prepared Paints I claim no advantage of discovery of chemical combinations; but having every facility that a complete manufacturing establishment can offer, with a full knowledge to compound a pure and durable Linseed Oil Paint, I offer the above as

PURE TINTED BODY PAINTS.

One gallon will make a perfect and glossy job on 200 to 250 square feet of surface.

EXAMINE THE BRAND

as not all Ready Mixed Paints are alike in quality.

ZIEGLER'S

READY MIXED PAINTS,

REQUIRING NO THINNING FOR USE.

The Body and Gloss Finish are superior and durable.

DIRECTIONS.

Observe the ordinary rules of Painting; have the surface dry and free from dust, cover knotty and sappy portions with shellac or sizing, putty all cracks and nail holes, allow sufficient time for each coat to dry thoroughly, and apply the paint smoothly and evenly.

CALCULATIONS FOR QUANTITY.

Rule for Ascertaining the Amount of Paint Required to Cover a Desired Surface.

Add the number of feet in width [front and rear] to the number of feet in length [both sides]; this multiplied by the average height, gives the number of square feet to be painted. This divided by 200, as one gallon of this paint covers 200 square feet [*two coats*], gives the amount required in gallons.

[EXAMPLE]	Front, 20 feet.
	Rear, 20 "
	Side, 40 "
	Side, 40 "

120

[Multiply] Height, 20 feet.

200)2400

12 gallons for 2 coats.

BEAUTIFUL,

DURABLE,

ELASTIC,

ECONOMICAL.

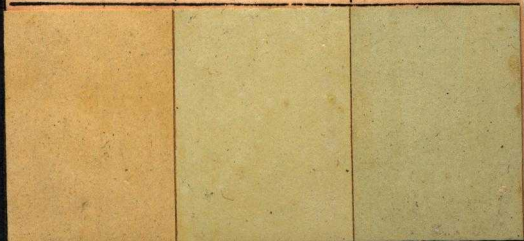
THE BEST PAINT IN THE MARKET.

PACKED IN
1/2 . 1 . 2 . 3 & 5 GAL. CANS

No. 45.

No. 46.

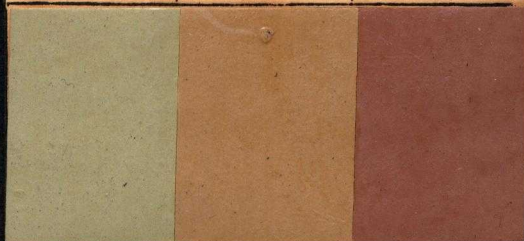
No. 47.



No. 48.

No. 49.

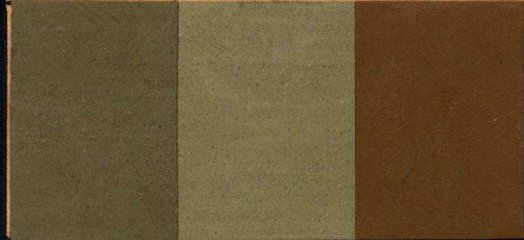
No. 50.



No. 51.

No. 52.

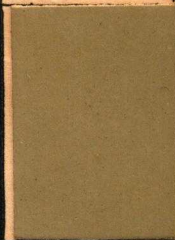
No. 53.



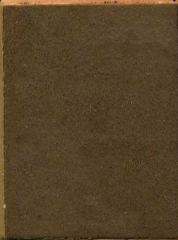
THE SAME TINTS
SOLD BY THE POUND

HENRY S. ZIEGLER'S
READY MIXED PAINTS

No. 54.



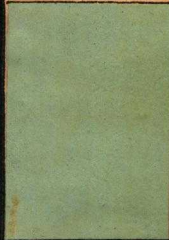
No. 55.



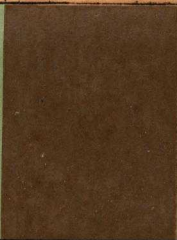
No. 56.



No. 57.



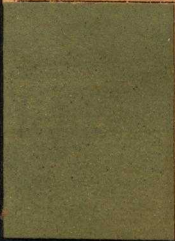
No. 58.



No. 59.



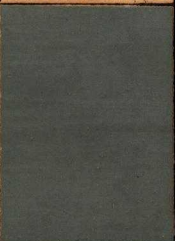
No. 60.



No. 61.



No. 62.



IF DESIRED

PACKED IN
KEGS, BARRELS & $\frac{1}{2}$ BARRELS

No. 63.

No. 64.

No. 65.



No. 66.

No. 67.

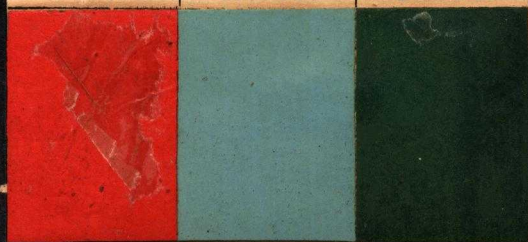
No. 68.



No. 69.

No. 70.

No. 71.



PACKED AS WHITE LEAD
IN 25.50.100 LBS. KEGS

HENRY S. ZIEGLER,

Successor to

ZIEGLER & SMITH,
MANUFACTURER.

STORE, No. 121 North Fourth Street.

FACTORY, Nos. 611 & 613 St. John Street.

PHILADELPHIA.

THE
**PAINTERS',
MANUFACTURERS' AND BUILDERS'
READY MIXED OIL PAINT**

is sold only by the Gallon, and manufactured to require
no additional oil, thinner or drier.

By mixing and grinding dry paint with sufficient Linseed Oil to make a paint

READY FOR USE,

a combination is made which for *Durability, Beauty and Economy* surpasses paint ground and prepared in the ordinary way.

The best materials are used in this paint, and positively no other oil than

PURE LINSEED OIL.

All the shades produced, comprising *White* for inside and outside, *Metallic Brown, Ven. Red, Yellow Ochre, Black, Permanent Green, Vermilion, Chrome Yellow, Blue, Imitation of Brick and Stone*, and all the shades of

COTTAGE COLORS,

are recommended for all classes of work, inside and outside,
on

WOOD, METAL, STONE, ROUGH CAST, &c.

SOLD BY THE GALLON,

And packed for shipment, in $\frac{1}{8}$, $\frac{1}{4}$, $\frac{1}{2}$, 1, 2, 3, 5, 10, 20, and 40 gallon packages.

Digitized by



**ASSOCIATION
FOR
PRESERVATION
TECHNOLOGY,
INTERNATIONAL**

www.apti.org

**BUILDING
TECHNOLOGY
HERITAGE
LIBRARY**

[archive.org/details/buildingtechnologyheritage](http://www.archive.org/details/buildingtechnologyheritage)

From the collection of:

Jablonski Building Conservation

www.jbconservation.com